

## Raising Achievement & Progress: Pupil Premium Tiered Model: Bluecoat Beechdale Academy: 2021-22

### Teaching:

**Literacy coordinator** to provide CPL to all colleagues and organise interventions

**Whole class reader** to develop an enjoyment of reading

**ALT core subject leads** to provide CPL to teachers, guidance to HoS and teach classes.

**Lead teachers** to continue to develop our quality first teaching.

**Additional teaching capacity** in English and Maths.

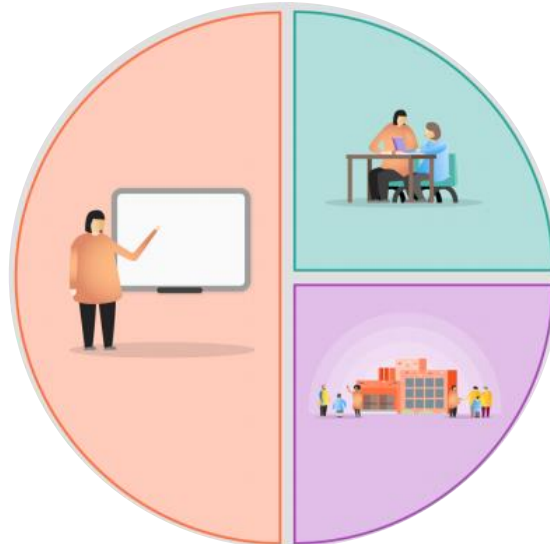
**CPL** Thursdays with a pedagogical focus e.g. oracy or literacy.

**Departmental meetings** to develop pedagogical content and detailed curriculum plans.

**Data analysis** following snapshots by SLT, T&L, DoA to identify gaps and targeted intervention.

All staff made aware of our **focus groups** and prioritise them in class teaching e.g. 20 to track, most vulnerable pupils.

Specialist **SEN teacher** employed to provide expert tuition to pupils on this pathway.



### Targeted academic support:

**Reading & literacy interventions** including switch on and inference intervention.

**Timetabled intervention sessions** designed to close the gaps, taking place in tutor time, some lessons, after school and during holidays.

**Online revision materials** to support e.g. Hegarty Maths & Seneca individualised assignments available to all students.

**Learning Resource Centre** open until 6pm every day.

**Free revision materials** for all year 11 pupils.

**Weekend residential** to support identified year 11 pupils.

**Academic coaches** employed to provide more focussed support.

**Achievement mentors** identify and develop strategies to improve the progress of key pupils.

### Wider strategies:

**Free breakfast** for all pupils every day.

**Tutor programme** focussing on literacy, oracy and study skills.

**Programme of enrichment activities** e.g. sports, arts, Jass award, healthy eating, swimming.

**Homework and study clubs** available every night of the week along with ICT facilities to support.

**Non-teaching Year Leaders** who address barriers to learning including attendance, safeguarding, attitude and behaviour.

**Aspiration raising:** priority for enrichment opportunities, careers appointments, further and higher education visits and employer interactions.

**Mentoring opportunities** to address barriers to learning, eg Thinkforward, counsellors and student support team.