

Bluecoat Beechdale Academy Covid Catch Up: Tiered Model

Teaching and Learning

Curriculum: Middle leaders to review and revise medium term plans to address lost learning. Adaptations made to sequencing to address gaps in knowledge.

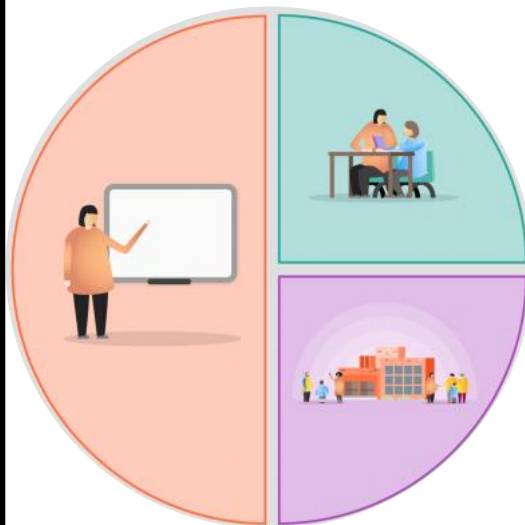
Literacy: Whole school focus on literacy and oracy strategies. Nominated colleagues are working with the National Literacy Trust to develop vocabulary and plug the gaps due to lost learning time. Middle leaders have received training on how to embed oracy strategies in lessons. Year 7 are using the Bedrock literacy to develop their range of vocabulary.

Assessment: Formative and low stakes testing used with each year group to identify gaps. All teachers to complete online Assessment for Learning course and embed strategies in their practice.

Teams: All staff to receive training on using Microsoft Teams to deliver online lessons effectively. All pupils to use Teams in lessons to ensure they can use this in the event of another lockdown.

Behaviour for learning: Year 7 to have a drop down day following lockdown to address behaviour for learning and reset expectations.

Weekly CPL sessions to include time designated to addressing all of the above.



Targeted academic support

Numeracy and literacy Coaching: Identified KS4 pupils receive extra support from our academic coaches. This may be in class, through withdrawal from lessons or outside of lesson time.

Additional sessions: KS4 pupils receive additional support either in after school or holiday sessions. Priority is given to disadvantaged and vulnerable pupils although not exclusively. This is for all subjects and courses.

Equipment and resources: All pupils preparing for exams to receive revision materials and access to websites. Equipment provided for pupils to include paper based resources for use at home; calculators; art sketch books and pencils.

Individual support: The most vulnerable pupils, including SEN and disadvantaged pupils, to have their own mentor to support them through this difficult time.

Wider strategies

IT access: Provide laptops and/or internet access for any pupil without these at home. This includes those who have to share equipment with parents or siblings.

Study café: Open our study café until 6pm to allow pupils an area to work plus access to IT facilities and other curriculum resources. Provide food and refreshments.

Welcome back packs: All pupils to receive a well-being pack on their return to school after lockdown.

Supporting students' well-being: Non-teaching Year Leaders and support staff to make home phone calls providing emotional support to pupils and parents. In addition they will address barriers to learning identified through internal data; attendance, safeguarding, behaviour.